

The Amputation of L Mendax

Nico Vassilakis 2002

the setting within v
stances or events a
information essen
the total of a person
somewhat steady lev
cosmic rays or rad



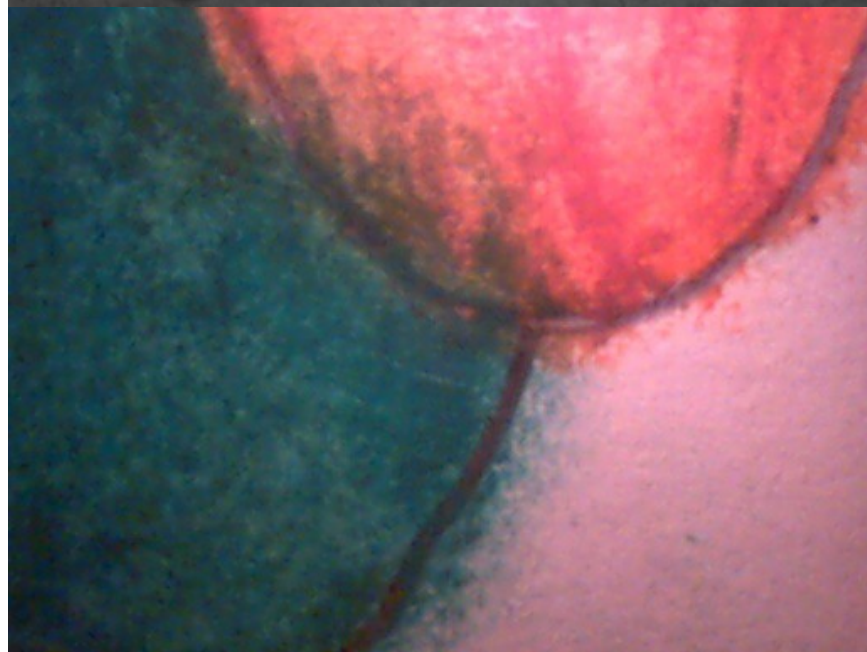
as the basis of meas
ving 7 : any of th
pass through the
of which the first is
metry, the second i
y, and the third is p



> <good ~ chess>
n an active or pass
d as a function wo
auction> <laughed
used as a function v
le or series <the tem



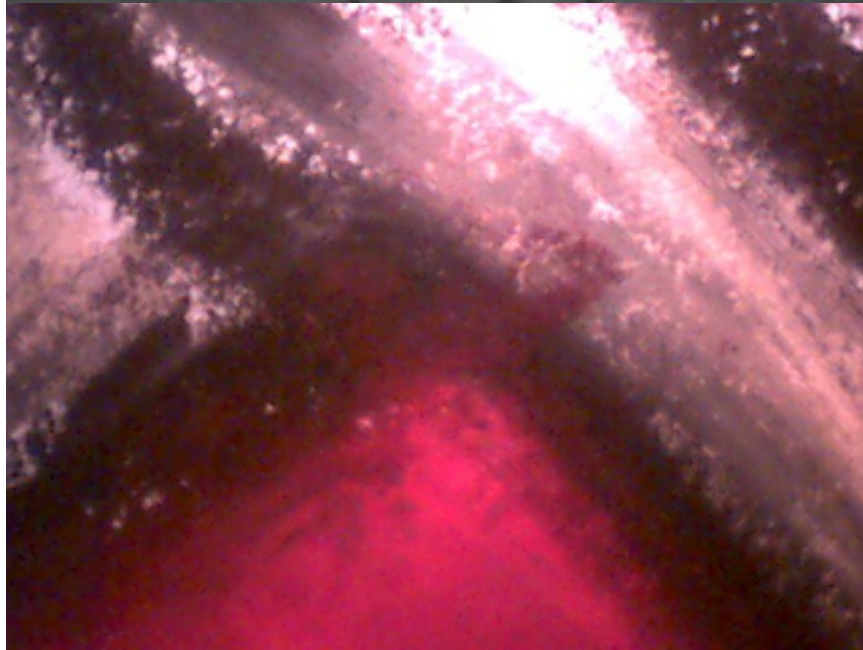
definiteness than A
after deliberation;
discredit by way
thing or esp. an a
or explanation.
assigned arbitrarily



thin a set of lines; s
e to the surface —
AY <went down the
rticular extent of s
the scope of a con
foreign policy> 6 :



ntion) 3 a : base
venience rather than
g (an ~ standard)
historical studies into
: existing or coming
a capricious and un



grasp the nature, w
erence between rig
nks no one ~s his e
or understanding :
to recognize with
ease the value of ~



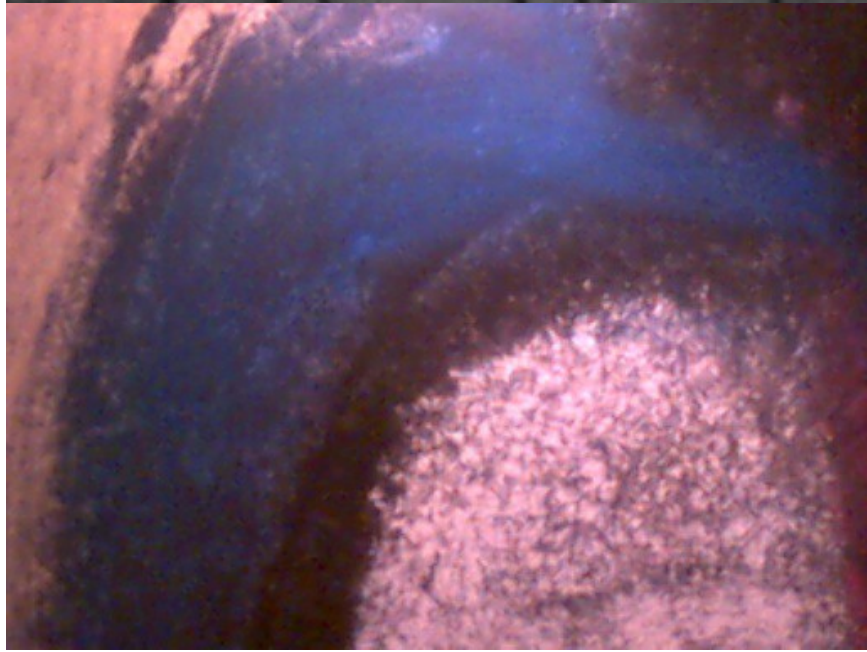
much *anymore?*), a
contexts and in c
s too sophisticated
In some regions t
positive constructio
d (*Writer's Digest*)



(as steel or glass) u
t and then cool (n
combination at lo
of a different speci
of combining with
and cooling



nt of attack, or tec
ten improper or ill
an ~ to beat the o
went off at an ~>
from which a playe
at penalty — usu. v



— more at DO] (15
ity **b** : one that i
<ideas that are ~
ed by ecclesiastical
b : the denunciatio
iation : CURSE



range of a quality,
nt of a vibratory m
an position to an e
an alternating cur
he horizon between
tical circle passing



akin to L *mendax*
vt (13c) **1** : to put
2 a : to change o
b : to alter esp.
cation, deletion, or
elf *syn* see CORREC



v-ə-lən(t)s\ n [ISV
es or feelings (as at
action 2 a : com
posite) b : uncert
t \-lənt\ adj — am
-vər-zhən, -shən\ n



d) of a planet or nat
rom a vertex of a g
pposite side or the
rallel side or face o
itude 2 : the high
a : vertical dista



has given us this
her, *altogether*. Since
wrong, but, though
non use and appear
ears of medical sch
a bit of *alright* —



wife) LONELY adds t
ship (felt *lonely* a
of sadness and po
LONE may replace
ALONE (a *lone* rob
, woe, and listless



2 : exaggerated or
embarrassment, itc
physical states t
individual 3 : meo
of antipathy or rep
n [allyl] + pyrethr



to record automatic
PERCEIVE; *also* : CO
nd exactly 3 : to s
payment of a fee 4
VE (<~ed an impress
register (<~ed at th
erequisite for voting



word to indicate a re
light sentence) 8
news) (2) : in the
) b : characterize
9 a — used as a fu
< ~ the outbreak
n proportion to < t



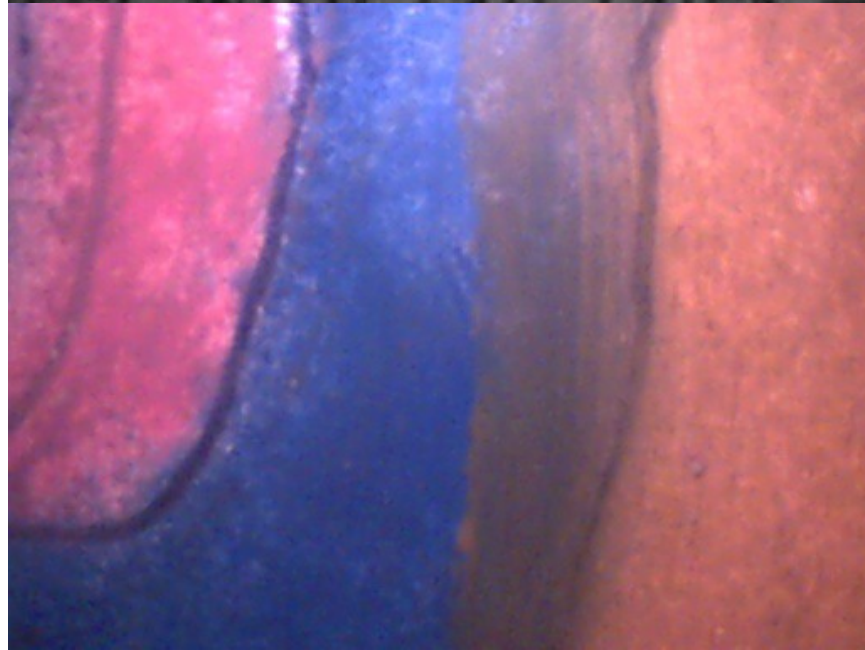
a unusual discern
gests wide experienc
eat sagacity and d
ning wise decisions
the restraint of so
lies to action guid
SANE stresses menta



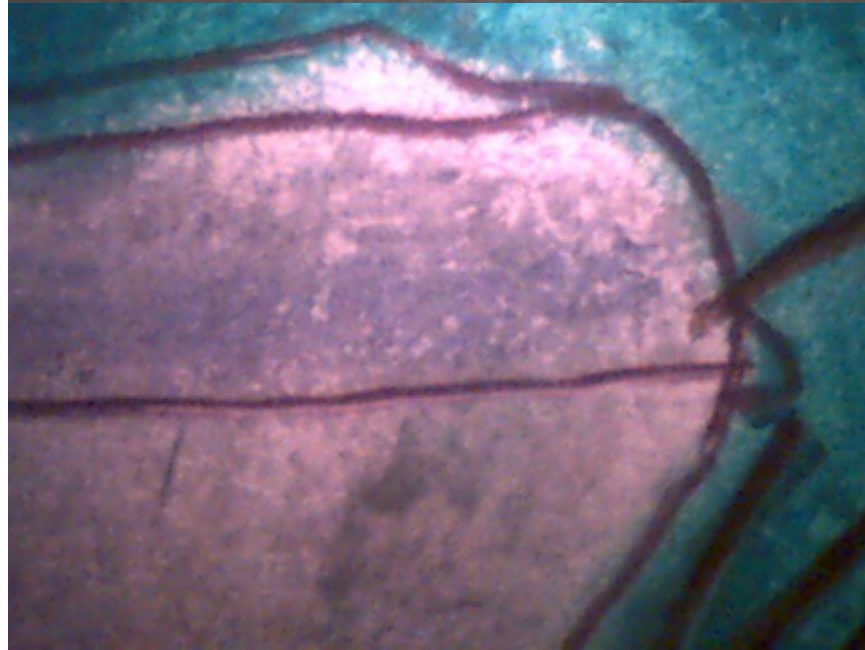
s, films, and molded
ny of various therm
ymers of vinyl comp
ME, fr. MF *viole vi*
nged instrument chi
body, flat back, slo
d, and low-arched b



strings of 2 : to m
string b : to threa
g d : to put togeth
ring 4 : to hang b
> 6 a : to extend
b : to set out in a li
set with tall tales



cept by phonetic char
something held to res
e of a letter **b** : th
d of a musical note
rd **d** : the cylindri
e : a shaft of a wa
UGHOUT, THOROUGH



(as to a person's re
our political enem
curse (<~ you!> b
with — usu. consid
: to turn or move v
— usu. considered v



labor **b** : ECONOM
return for payment
ke and hold under a
n and enjoyment of
the possession and
possession and use o



to glance over rapid
1 : inclination from
's bow or stern 2
ngle between the top
r to the surface of
at is sensibly straight
ane



[*pome*]: resembling
[MF *pommade* oil
fr. *pomo* apple, fr.
fragrant hair dressin
ō-^h n [ME, modif.
(15c)]: a mixture
of wax and used to



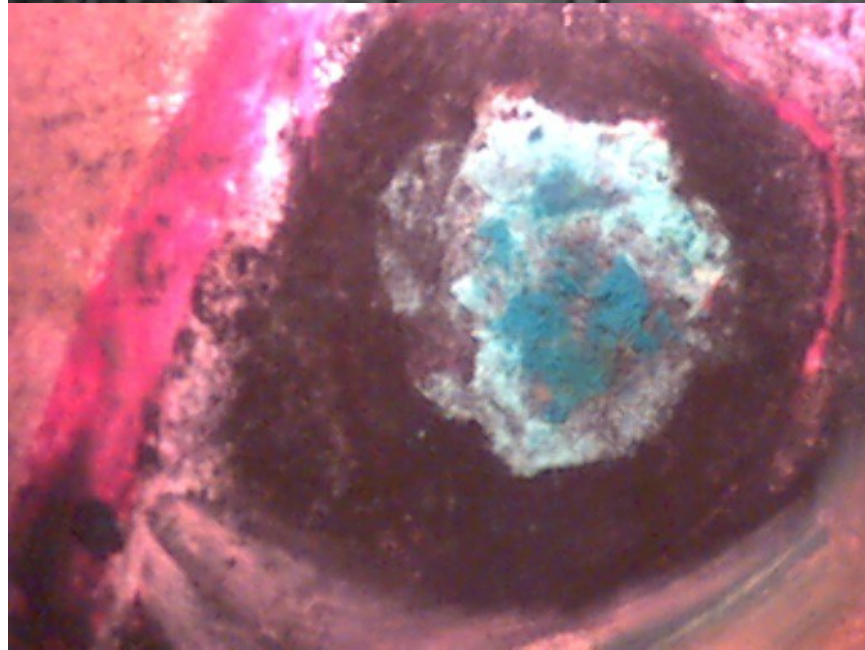
(1) . a selection of
(2) : the group of pe
up of persons selecte
(3) <a ~ of experts>
dience a topic of us
ION (3) : a group
quiz or guessing gam



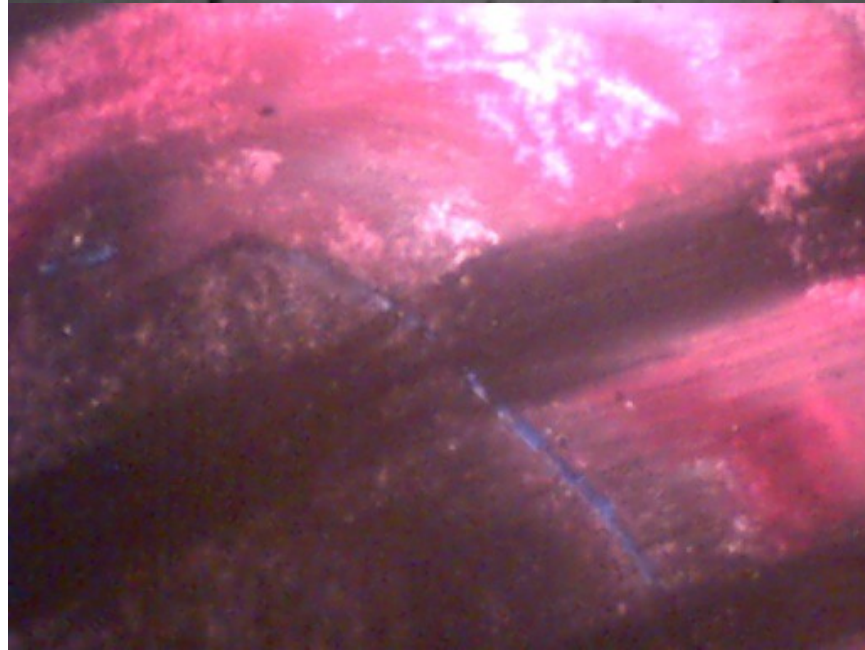
ving being 15. livi
<forest ~> 16 a
vement <stirrings of
time <the political ~
vigor <~ of the part
ave the patient a new
omething resembling



s, BOONHOLE, MONIA
suggests openhanded
amount given; GENE
e than size or impor
bitting giving or pro
ppriate to lords or pri
who is liberal: as a :



confronted by <~>
concern for <the pr
as *faced* with ruin>
th 8 : to cause (tro
~ vi 1 : to have th
to turn the face in a



u. small and rectangular
POSTCARD (2) : VIS
computer informa
magnetic encoding
for insertion into a
RAM; esp : a sports
STING CARD in th



from adjacent mater
lengths, frequencies,
on 6 : a narrow s
strip of material app
of strips hanging a
academic dress c
oves on a phenogr



a destructive disease
the bark and cambium
parasitica syn. *Cryphaea*
several oaks having
edges: as a : CHINA
(*quercus*) of eastern No.
yellow-green above



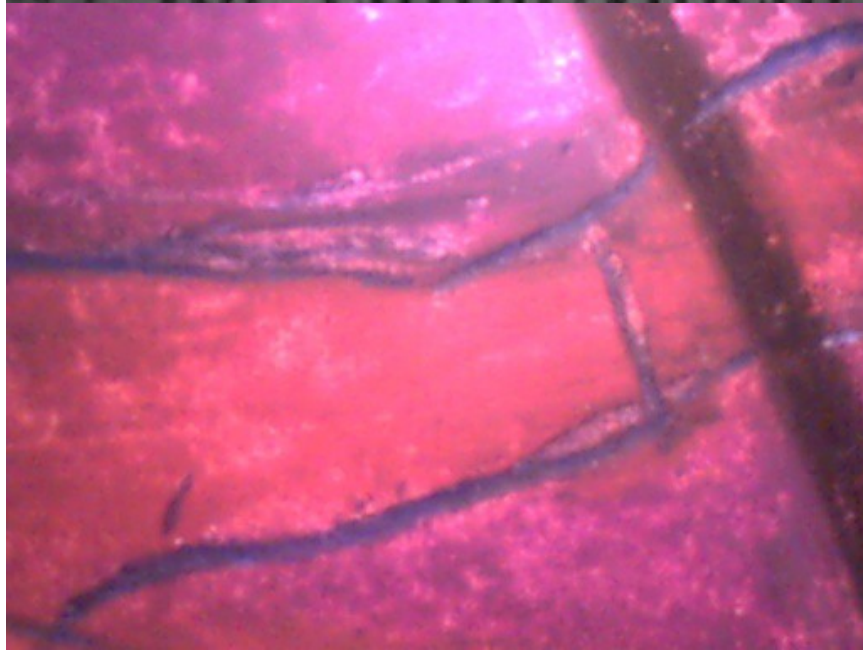
on, -(,)win, ÷ -,wīn\
o beget — more at K
apparent qualities or
d by or proceeding fr
> c : sincerely and
d : ACTUAL, TRUE <a



shrubs with alternat
us flowers; *esp* : or
inguished from the
f several plants of ge
TOOTH VIOLET 2 : a
ghtness, and medium
t *violino*, dim. of v



the whole design of
ny of various device
oling for pipes or pip
relating to, dealing v
: a card certifying
nion 2 : something
ry for employment



op.] (15c) **1** : SENSOR
capable of being stim
ity, or contact) (a p
m) **3** : highly resp
amaged; *esp* : easily
tudes and feelings o
xcessively or abnorm



d is often kept as a ca
had\ n 1 : the kni
ho successfully seeks
ho is pure, noble, and
n-,tēn\ n [F, fr. OF
ce, fr. ML *galatina*,
elare to congeal free

